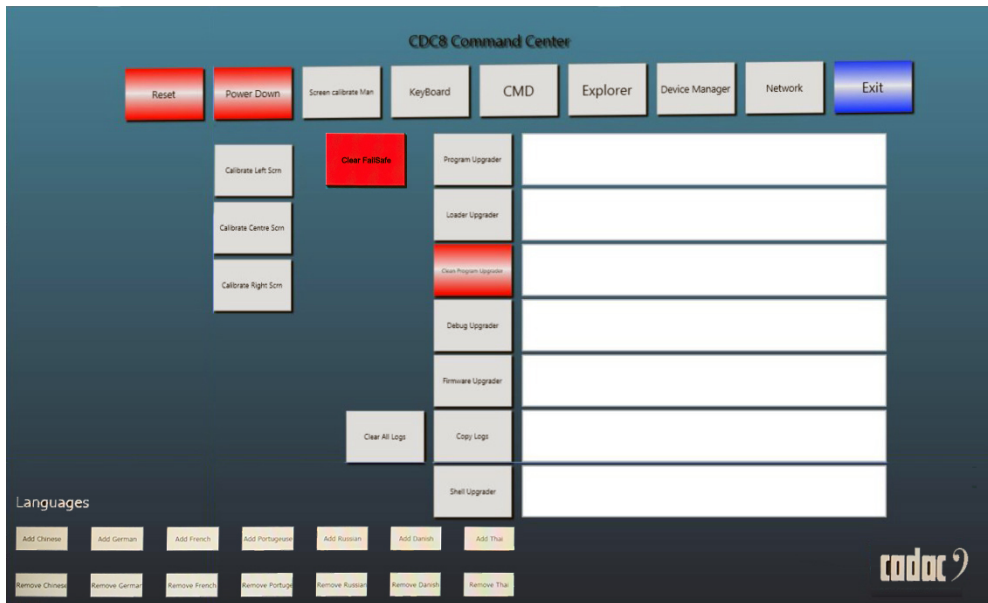


Overview

Command Centre and Loader screen overviews



Description

This document provides an overview of the Command Centre and Loader screens

Contact

Cadac Holdings Limited
One New Street
Luton
Bedfordshire
LU1 5DX
England

Tel: +44 1562 404 202

Email: support@cadac-sound.com

www.cadac-sound.com



Introduction

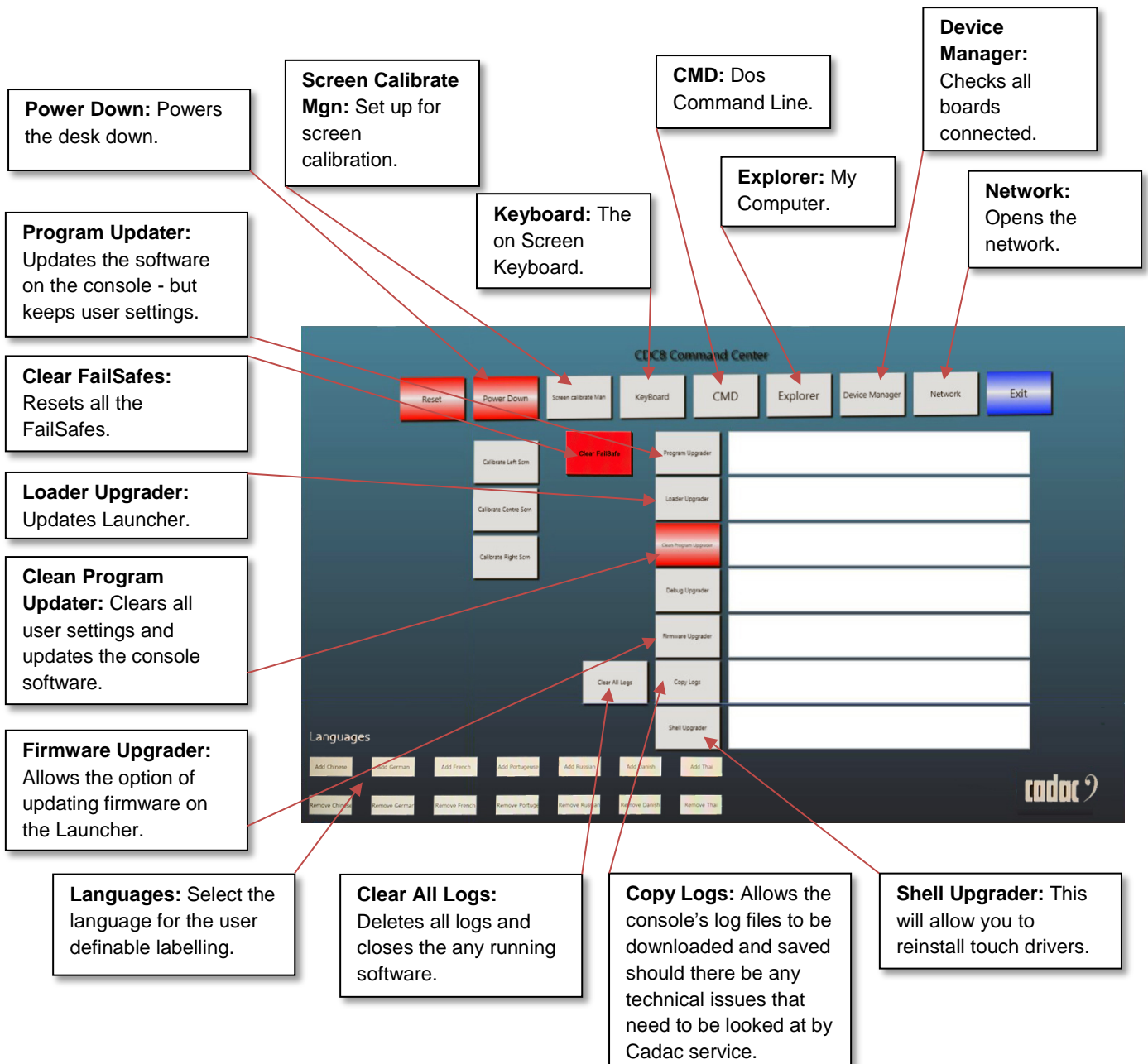
This guide provides an overview of the Command Centre screen and the Loader or “launcher” screen on the CDC six, CDC seven and CDC eight.

It will provide a brief explanation of the functions of the “buttons” on the screen.



Command Centre screen

The screen shows the Command Centre screen from the CDC eight, the CDC six and CDC are similar:



Loader or "launcher" screen

The screen shows the Loader screen from the CDC eight, the CDC six is similar:

Calibrate Faders: This will pause the console from opening until the fader calibration is complete.

Close Loader: Closes the loader screen.

Updates Complete: Only available after firmware updates. This continues the launch on the console.

Console Type: Opens console selection window.

Update Left Fader
Update Right Fader: Identifies USB boards and shows board type and firmware version.

Update Encoders: Selectable only when firmware update has been chosen in the command centre. It opens the HID bootloader for updating the chosen board's firmware.

Right Console: This Window shows the loading of the console and informs of any updates occurring.

